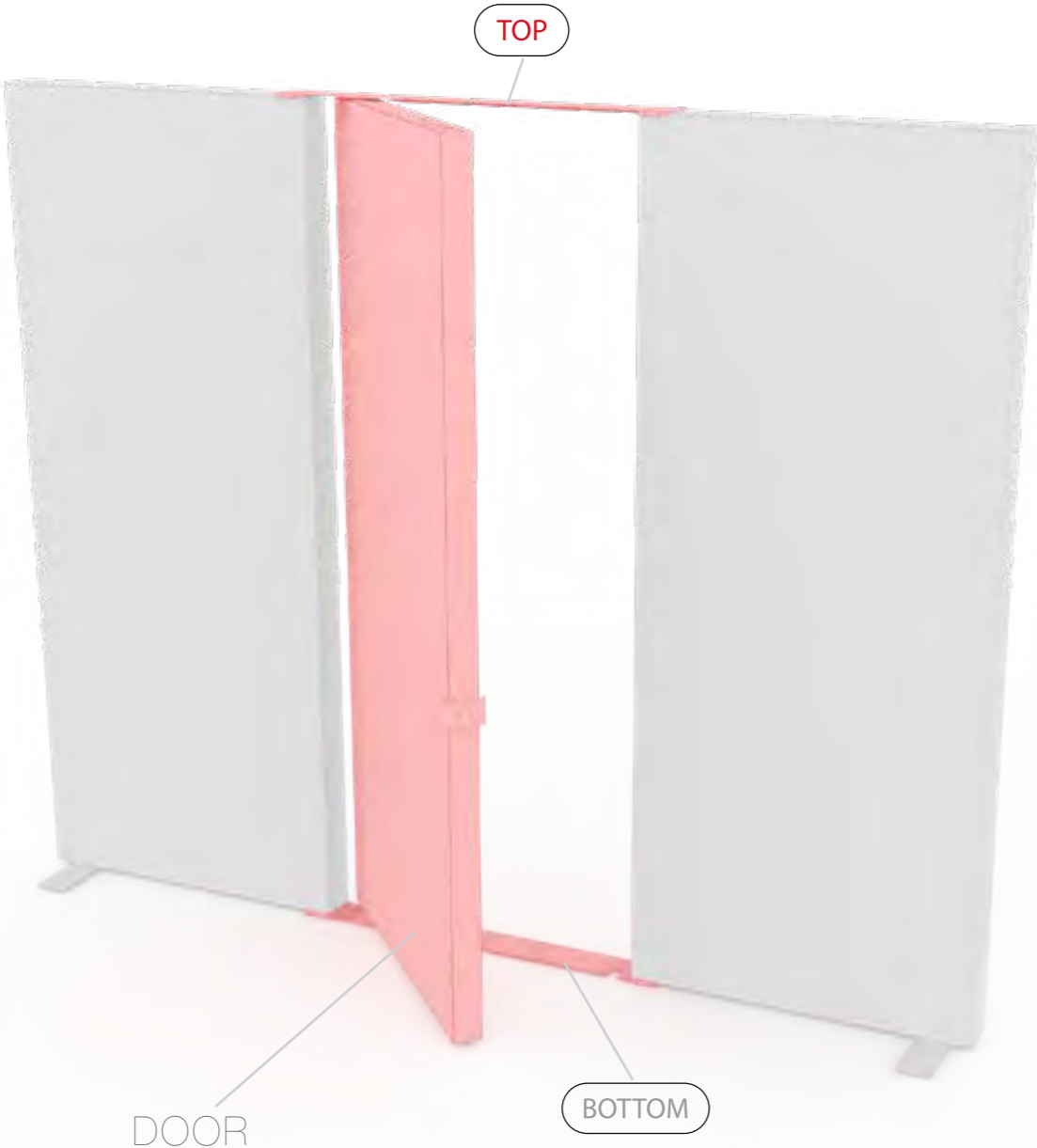


SET UP INSTRUCTION
ACCESSORIES

**BIG LED UP
DOOR**



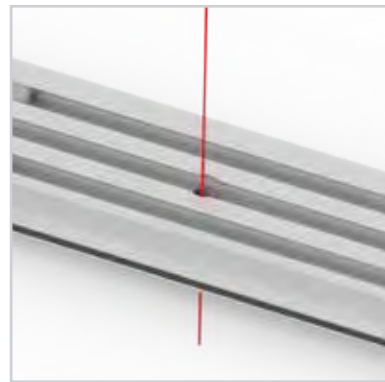
Gerade Version/straight version 4
Aufbauanleitung/set up instruction



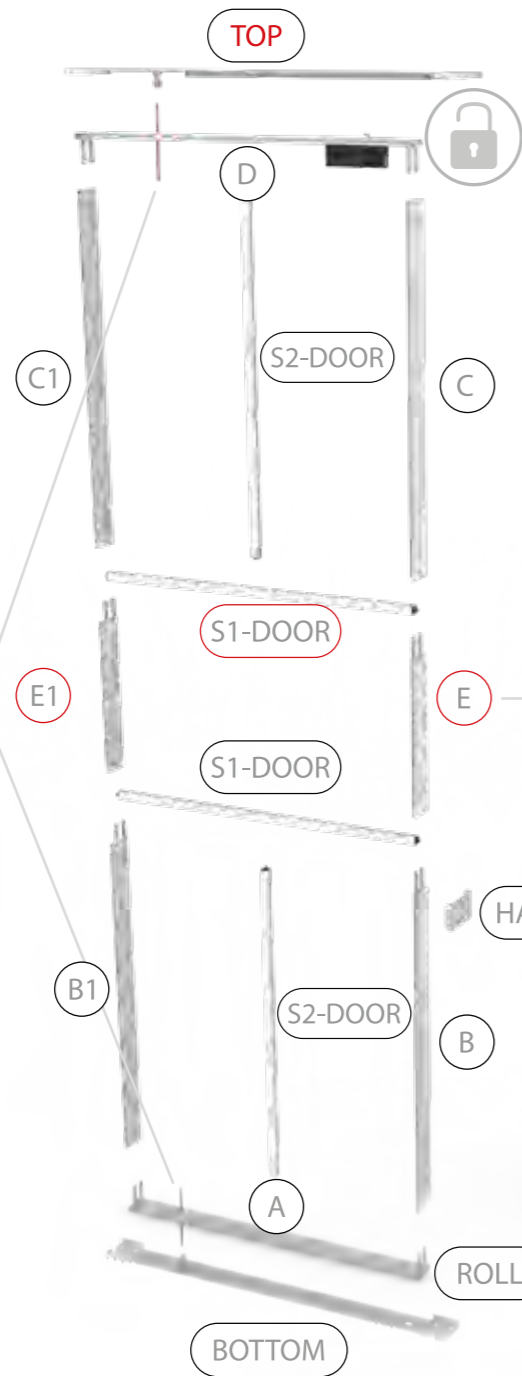
Eck- & Kojenversion/corner & storage version.....30
Aufbauanleitung/set up instruction



BIG LED UP DOOR



AXIS

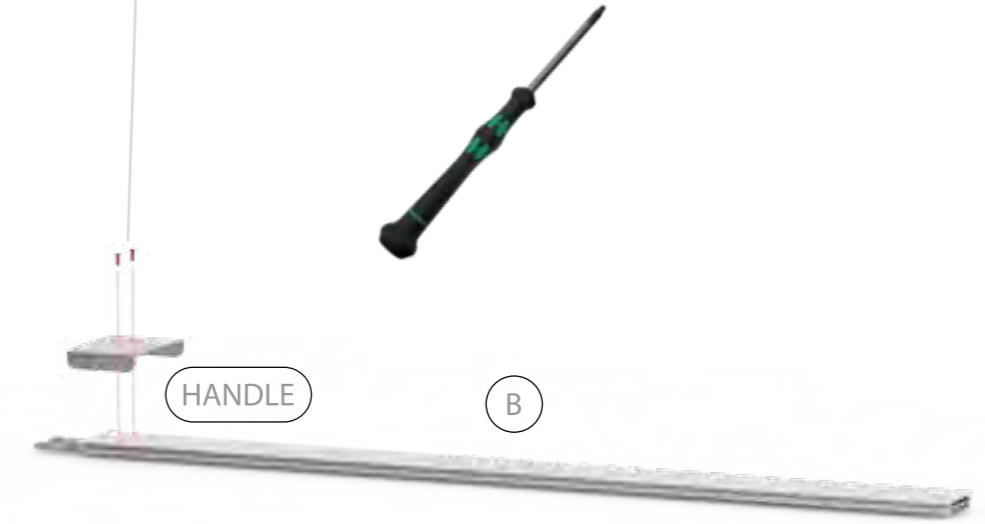


RAHMENGRÖSSE/FRAME SIZE:
98 x 199,2/ 229,2/ 247,2/ 297,2cm

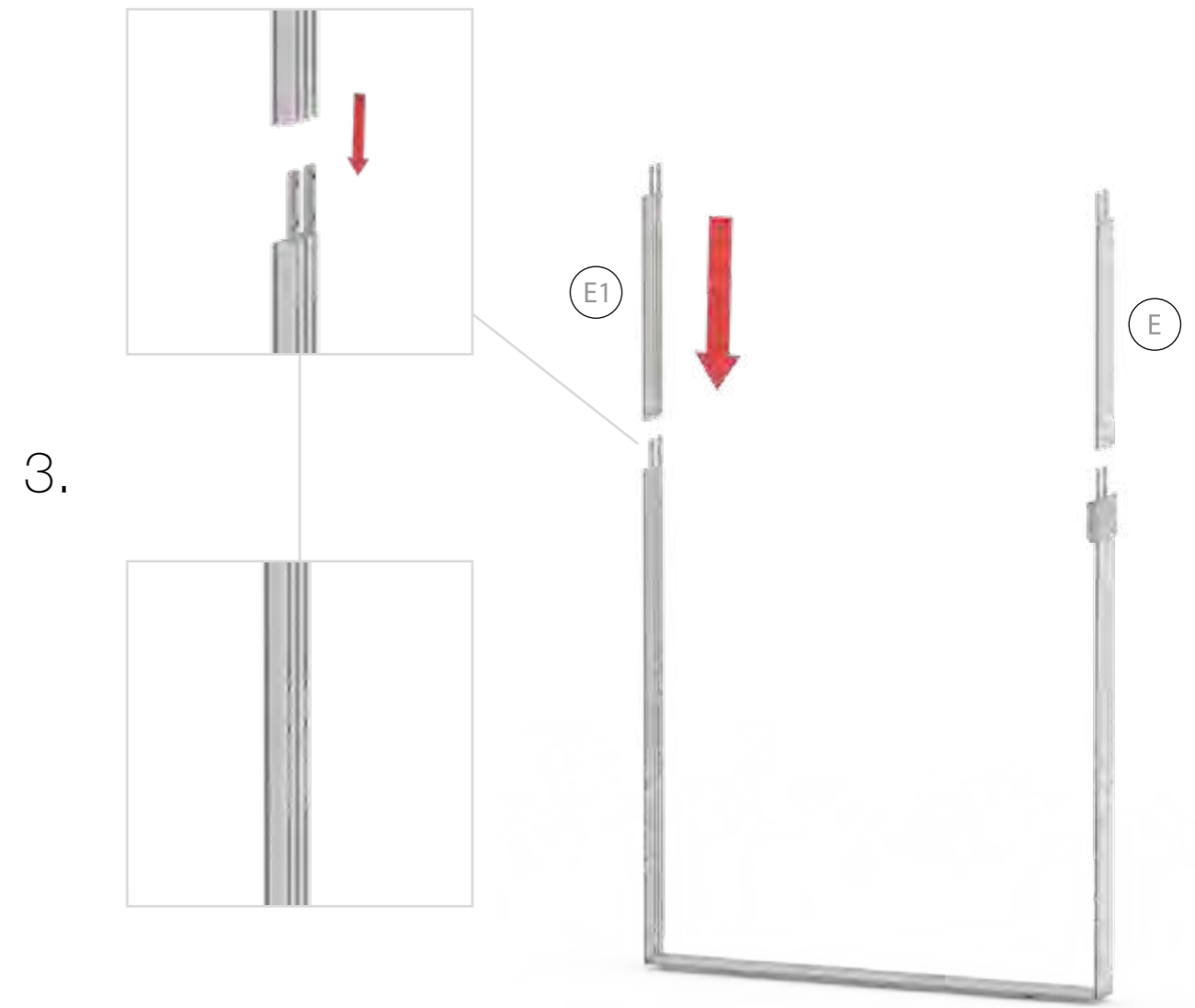
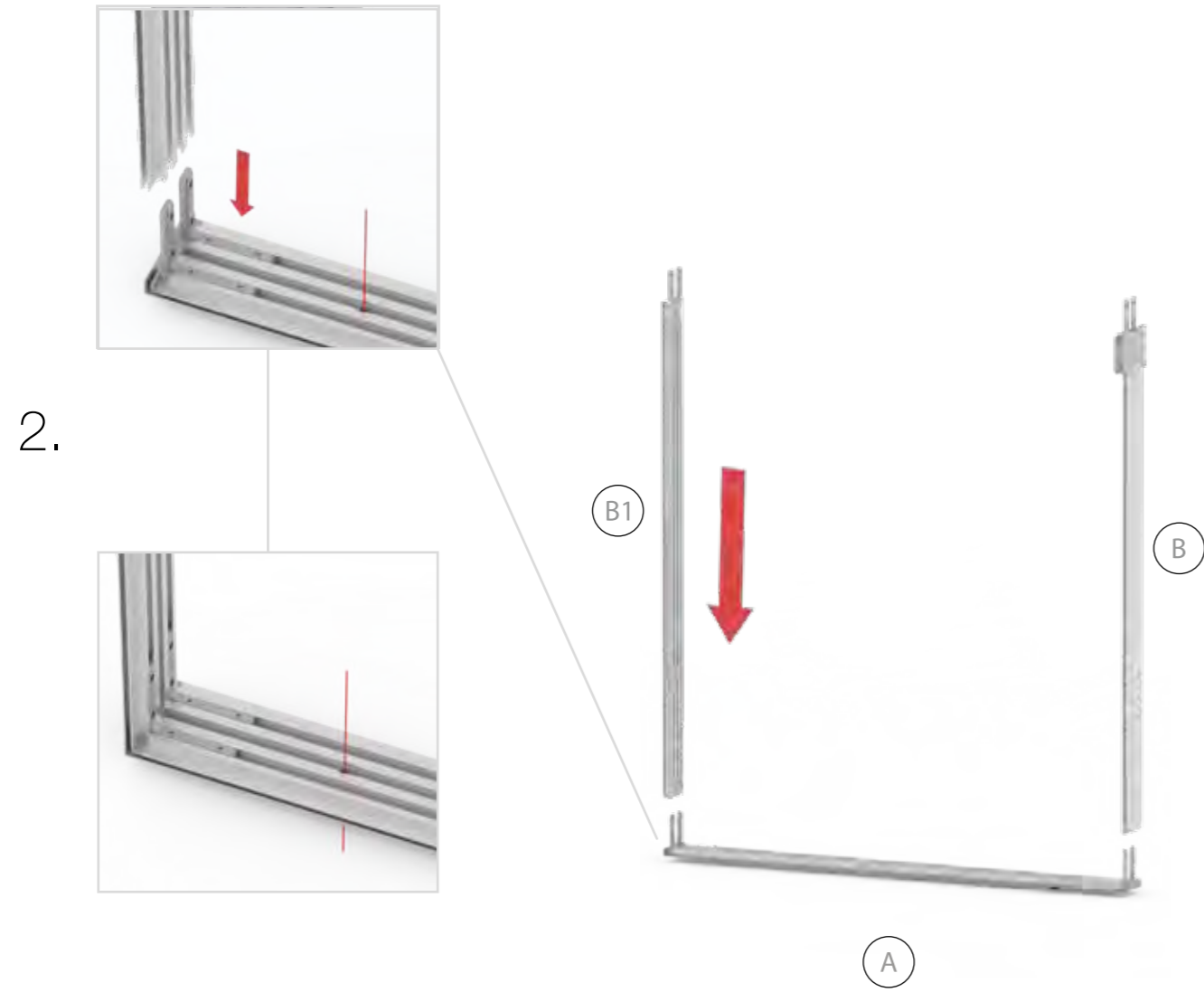
E1 S1-DOOR E
NUR FÜR DIE HÖHE
230/248/298 ERFORDERLICH
ONLY NEEDED FOR THE
HEIGHT 230/248/298



1.

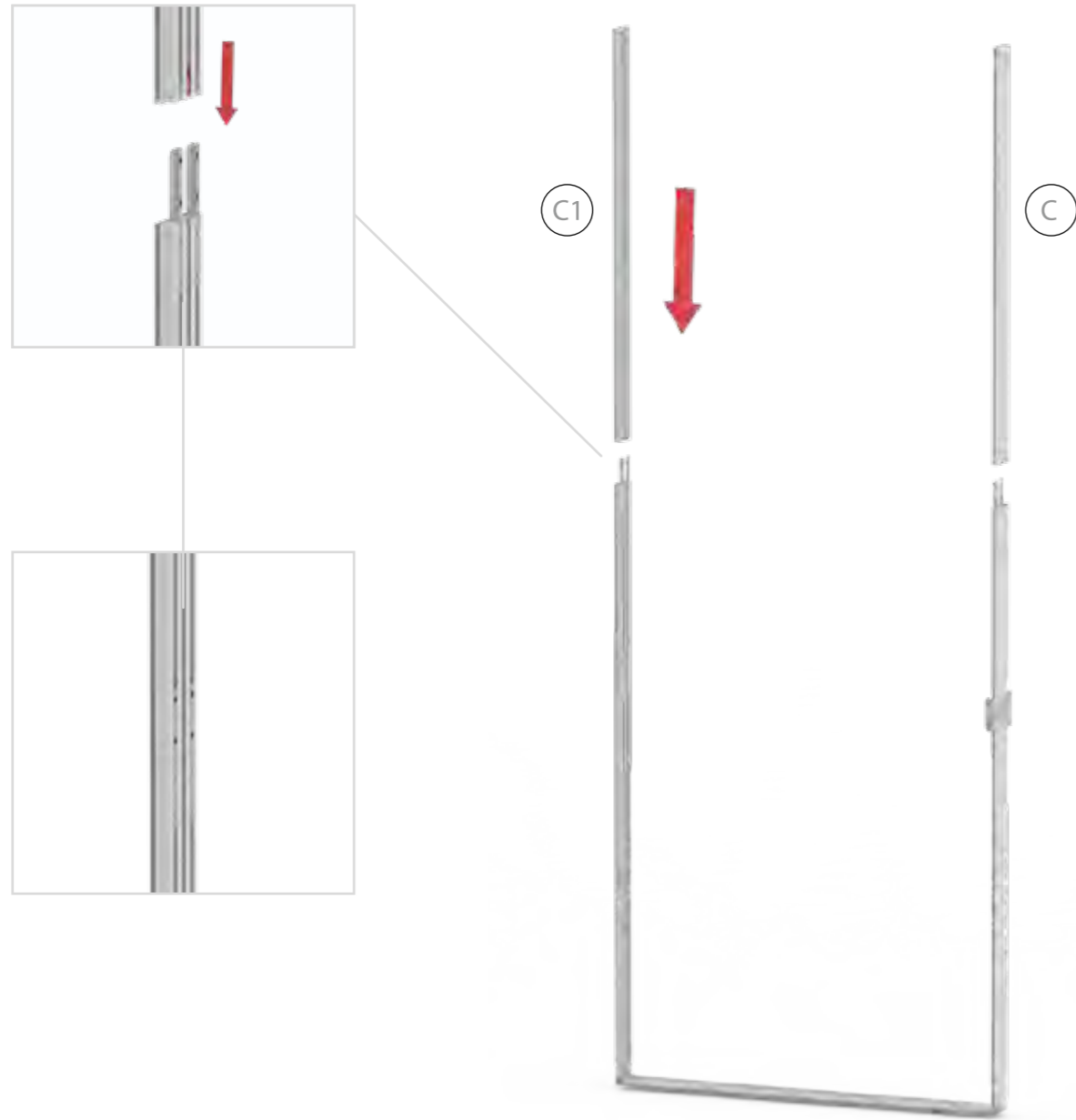


TÜR/DOOR

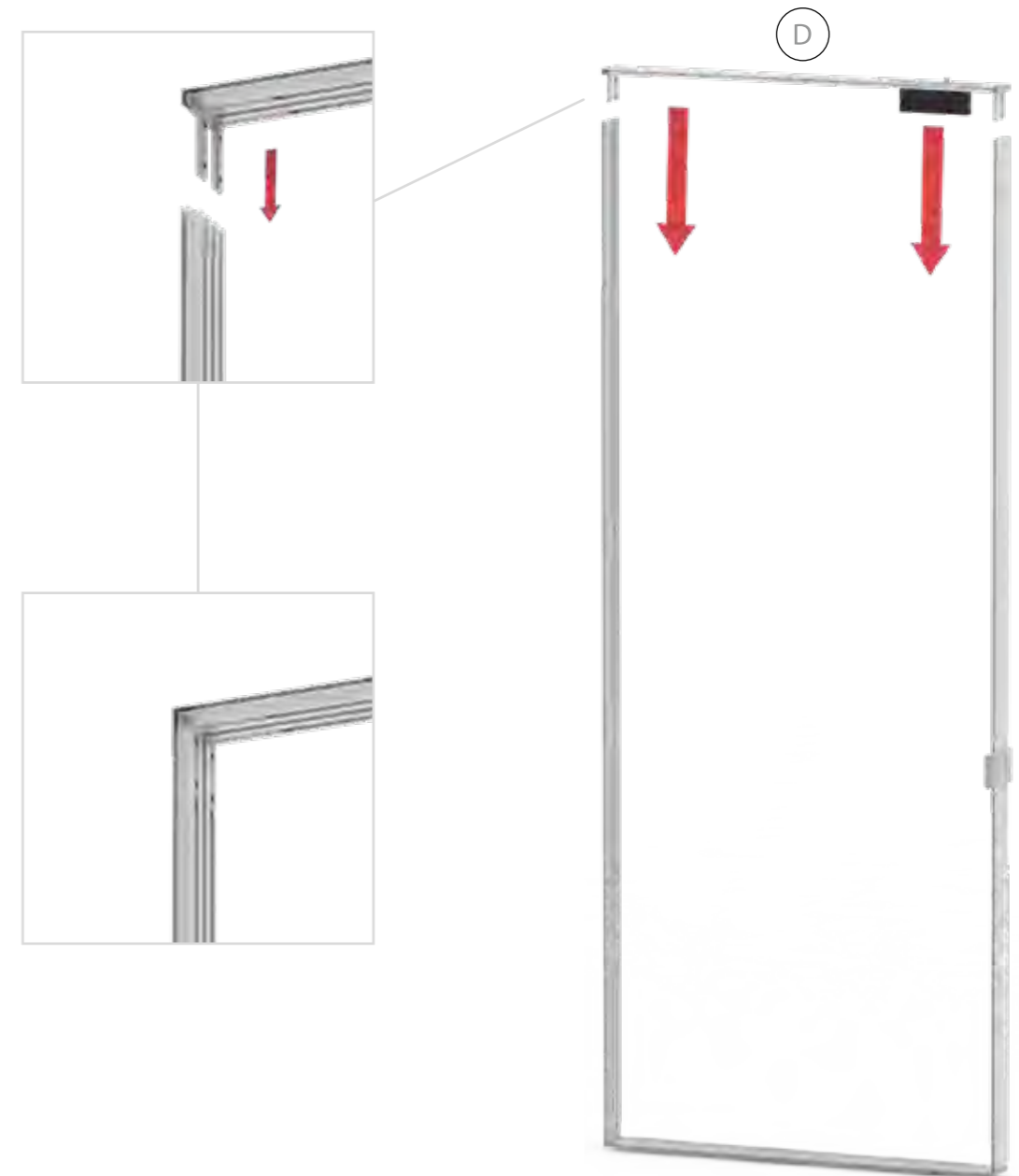


TÜR/DOOR

4.

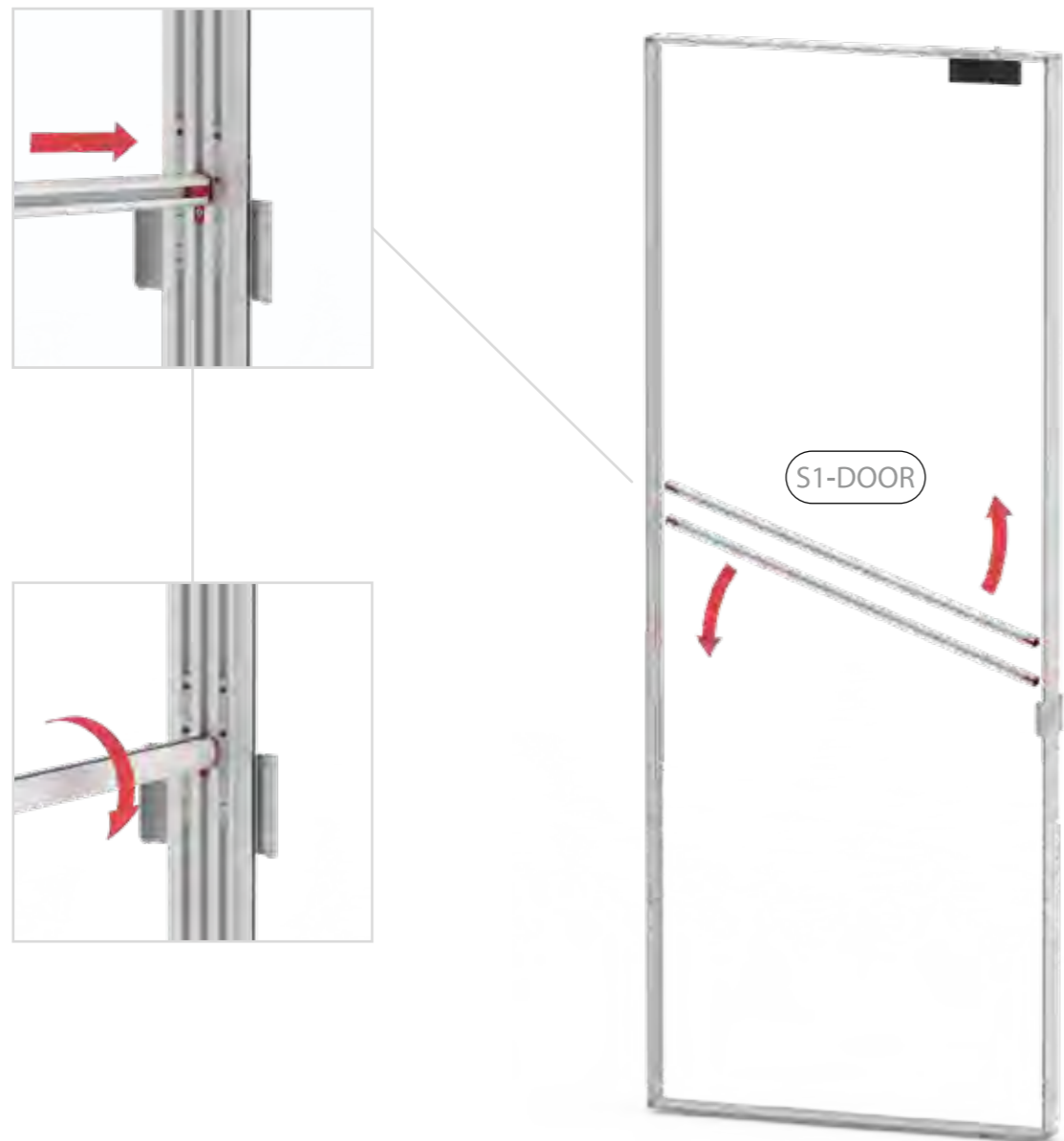


5.

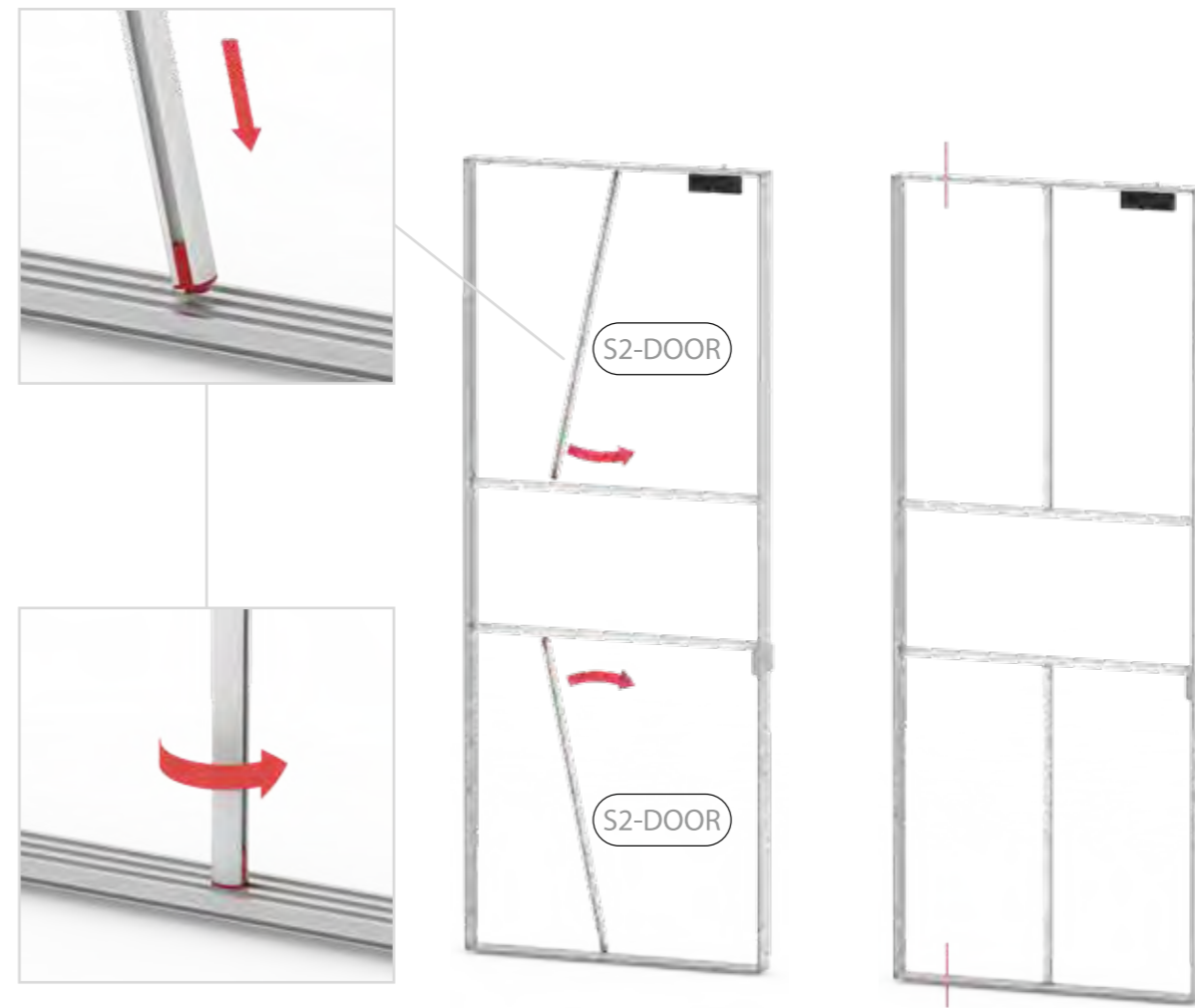


TÜR/DOOR

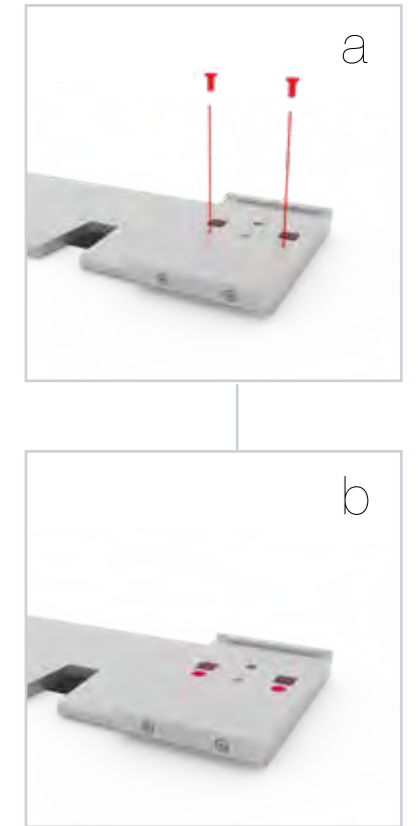
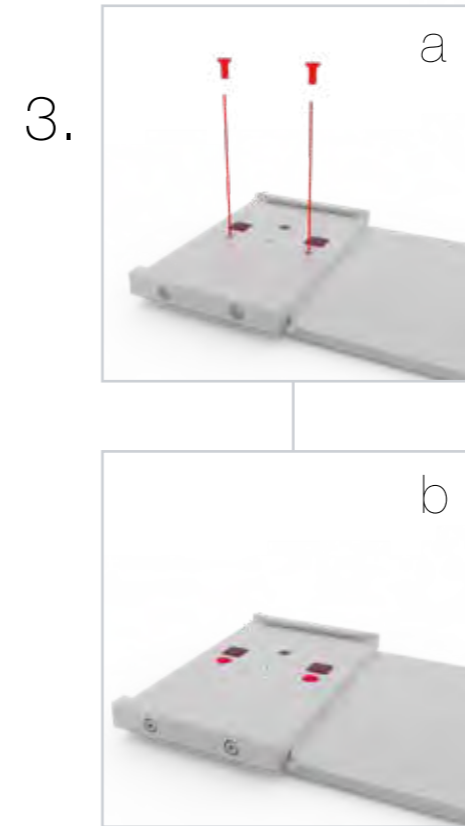
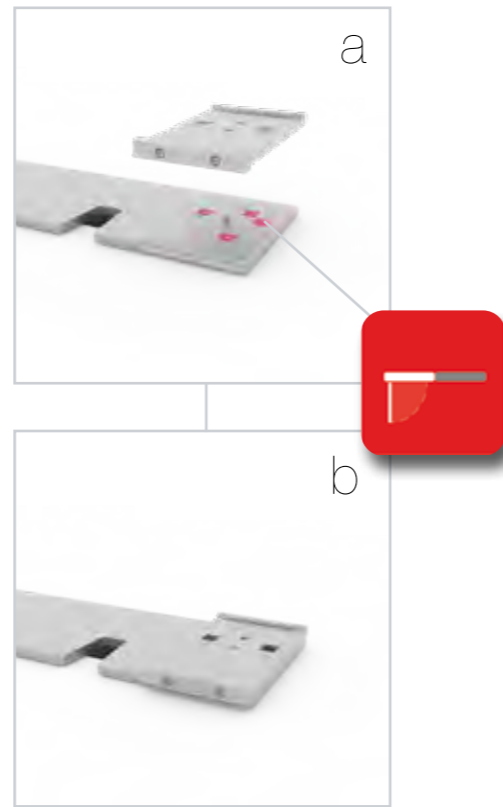
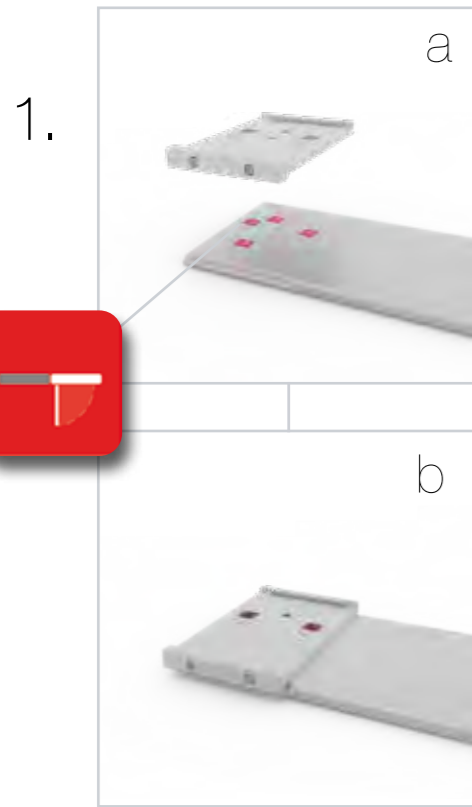
6.



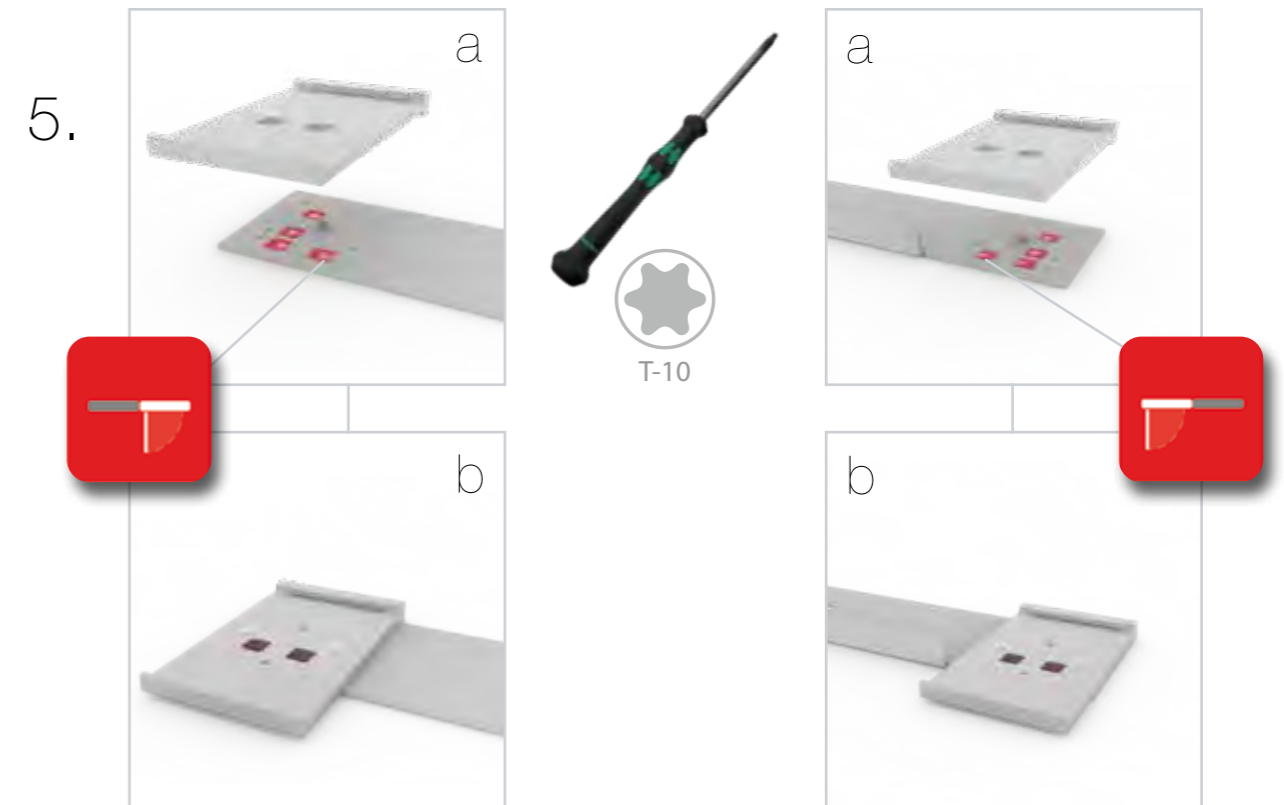
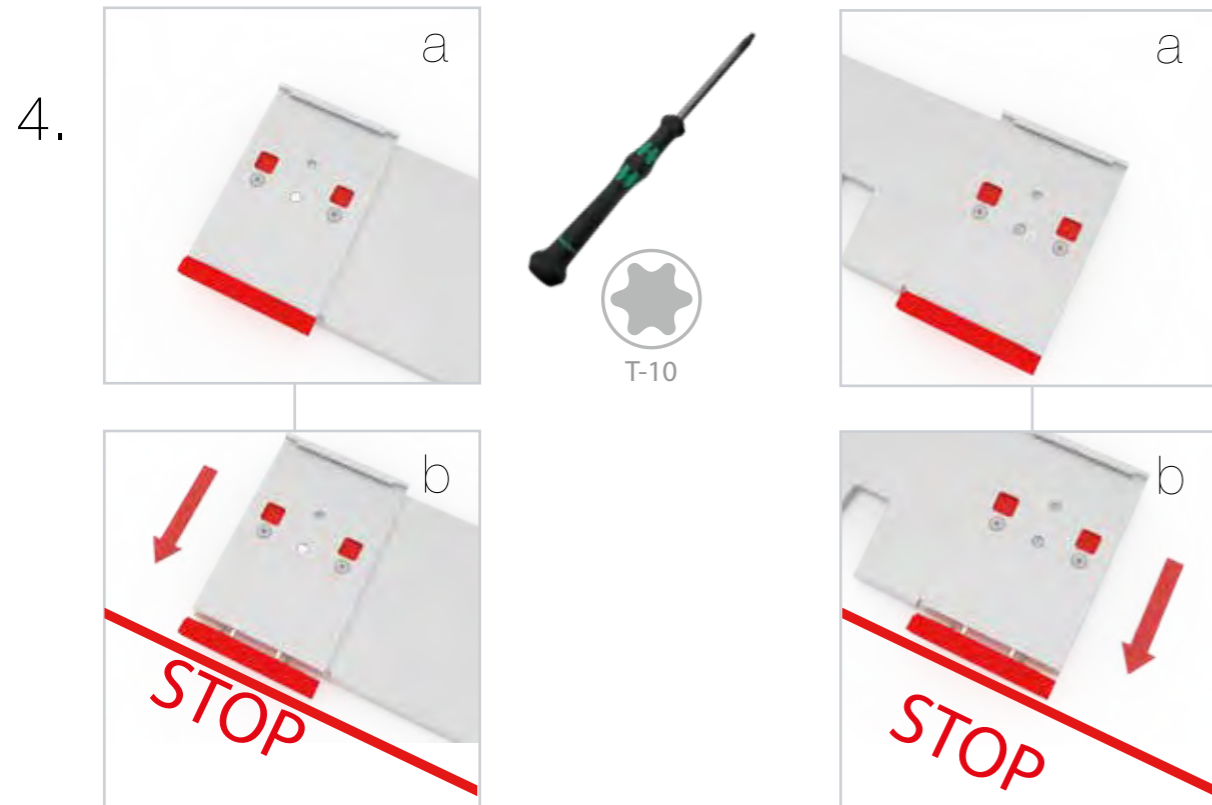
7.



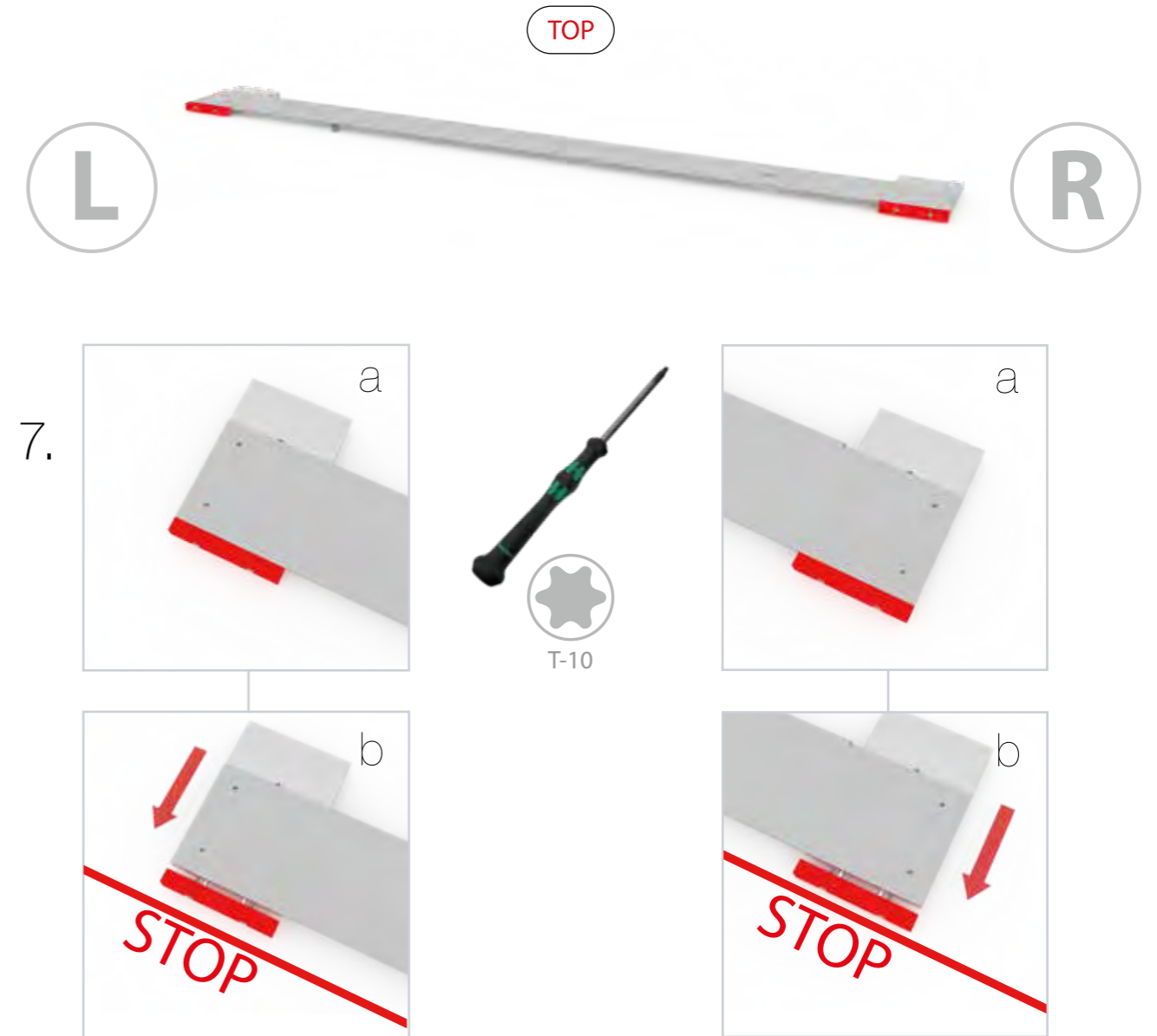
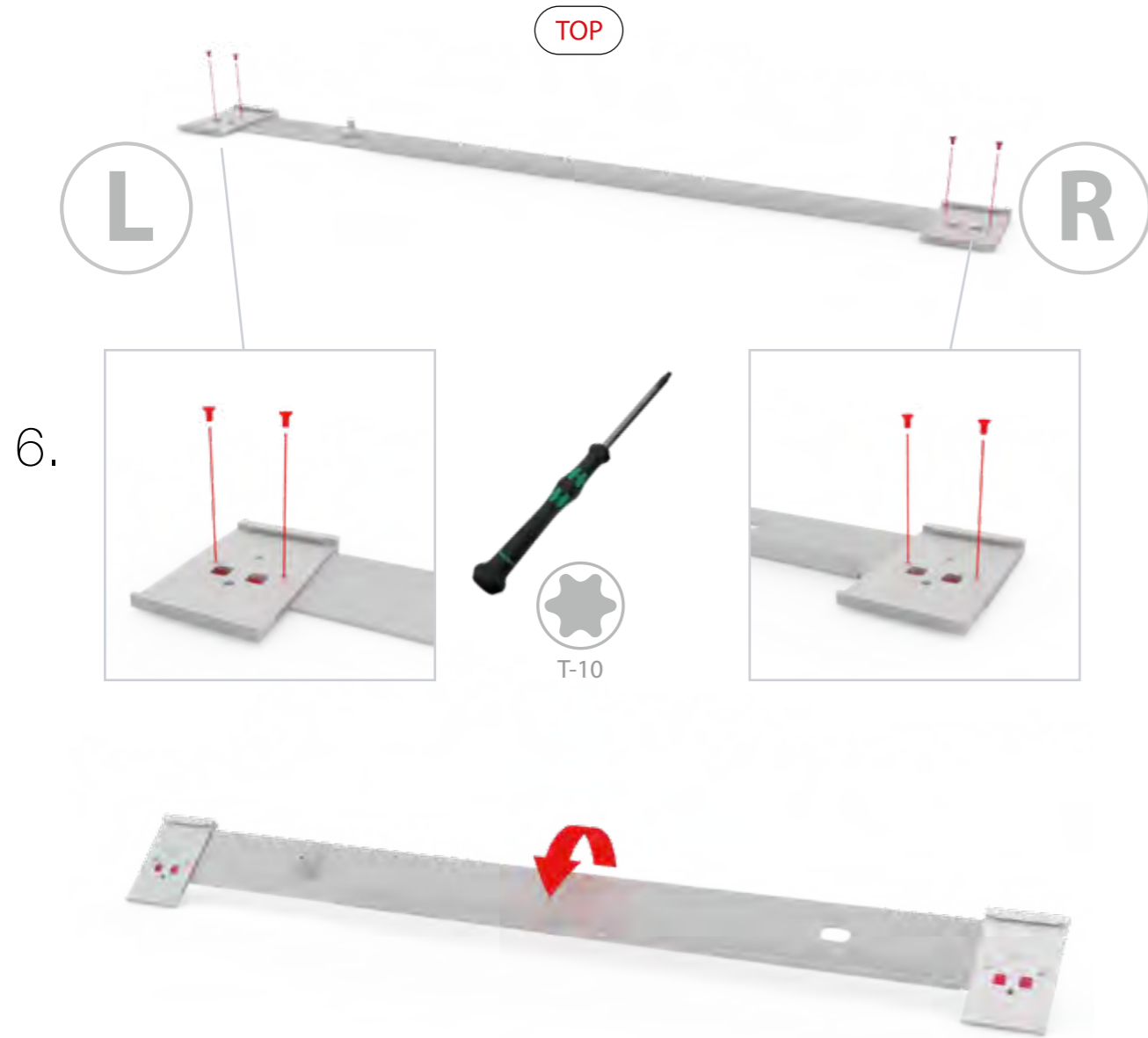
GERADE VERSION/STRAIGHT VERSION



GERADE VERSION/STRAIGHT VERSION

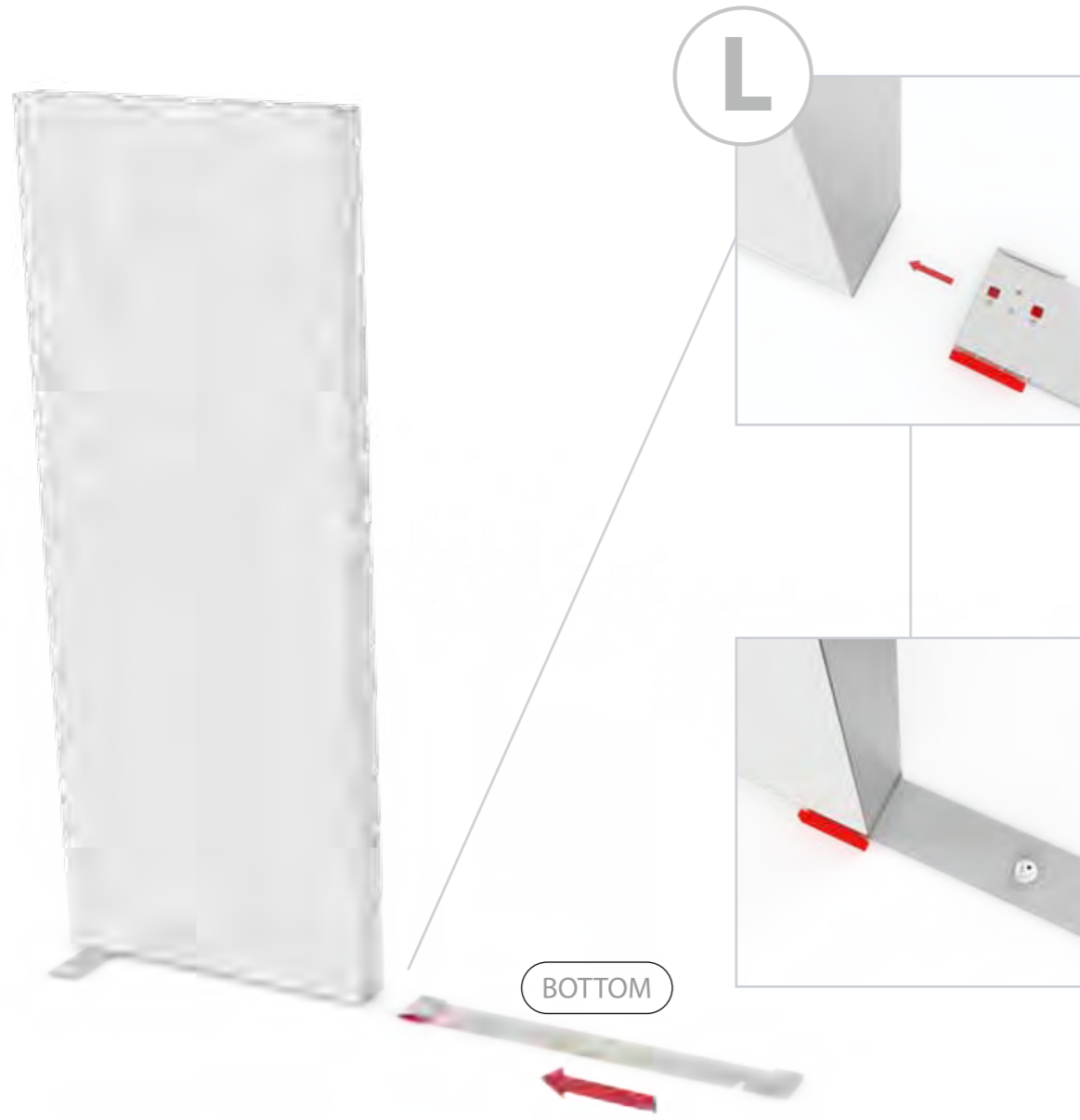


GERADE VERSION/STRAIGHT VERSION

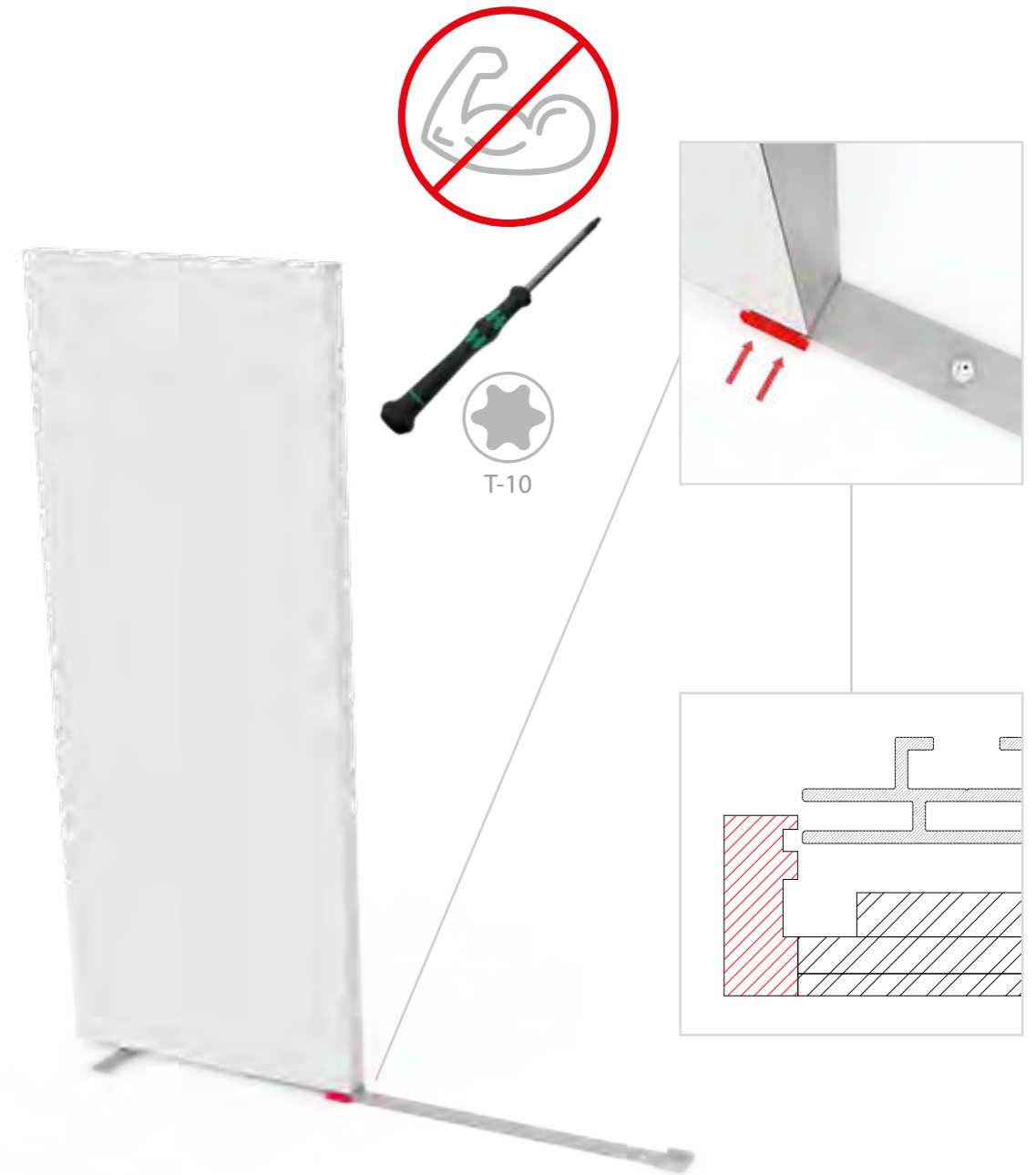


GERADE VERSION/STRAIGHT VERSION

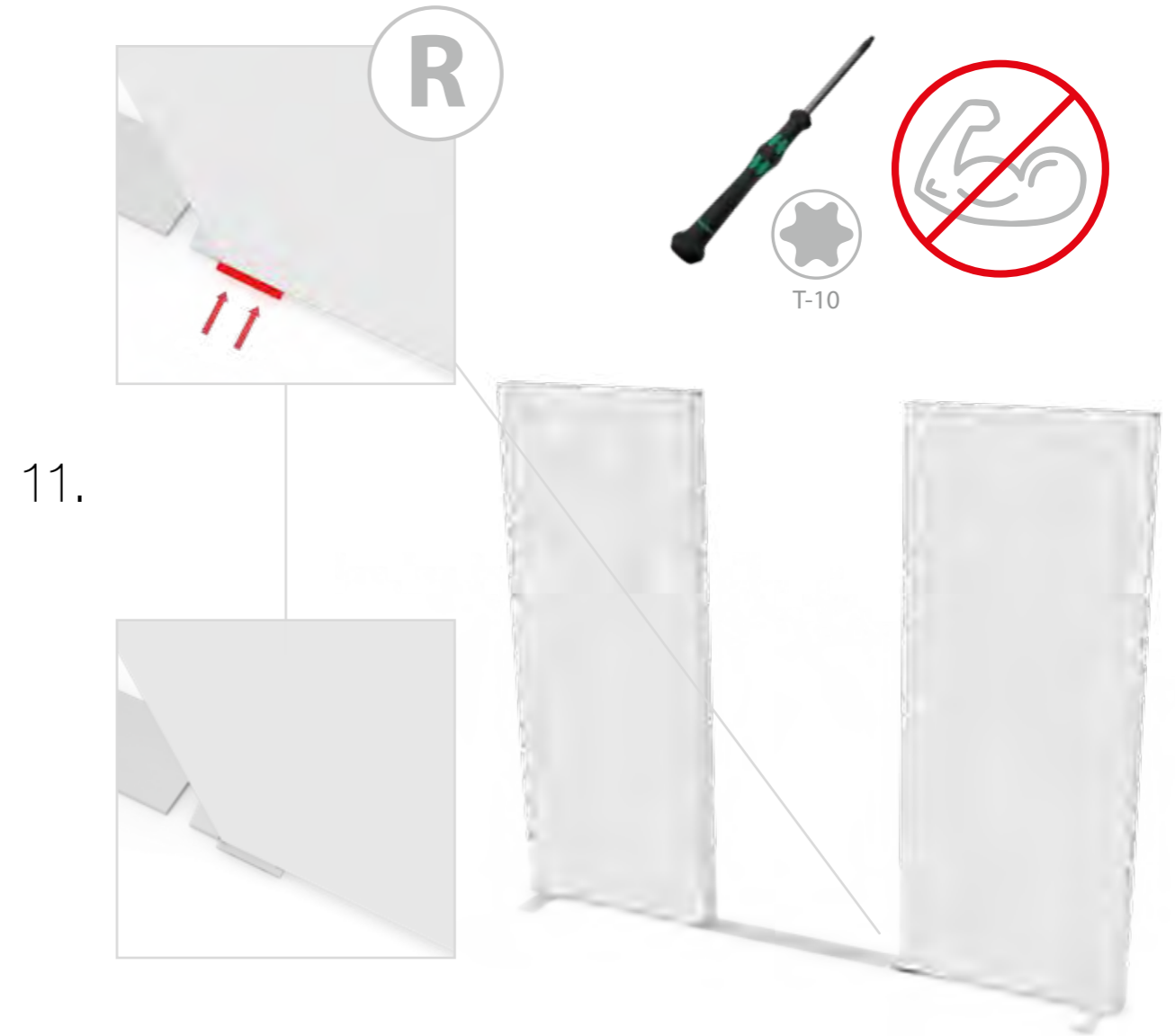
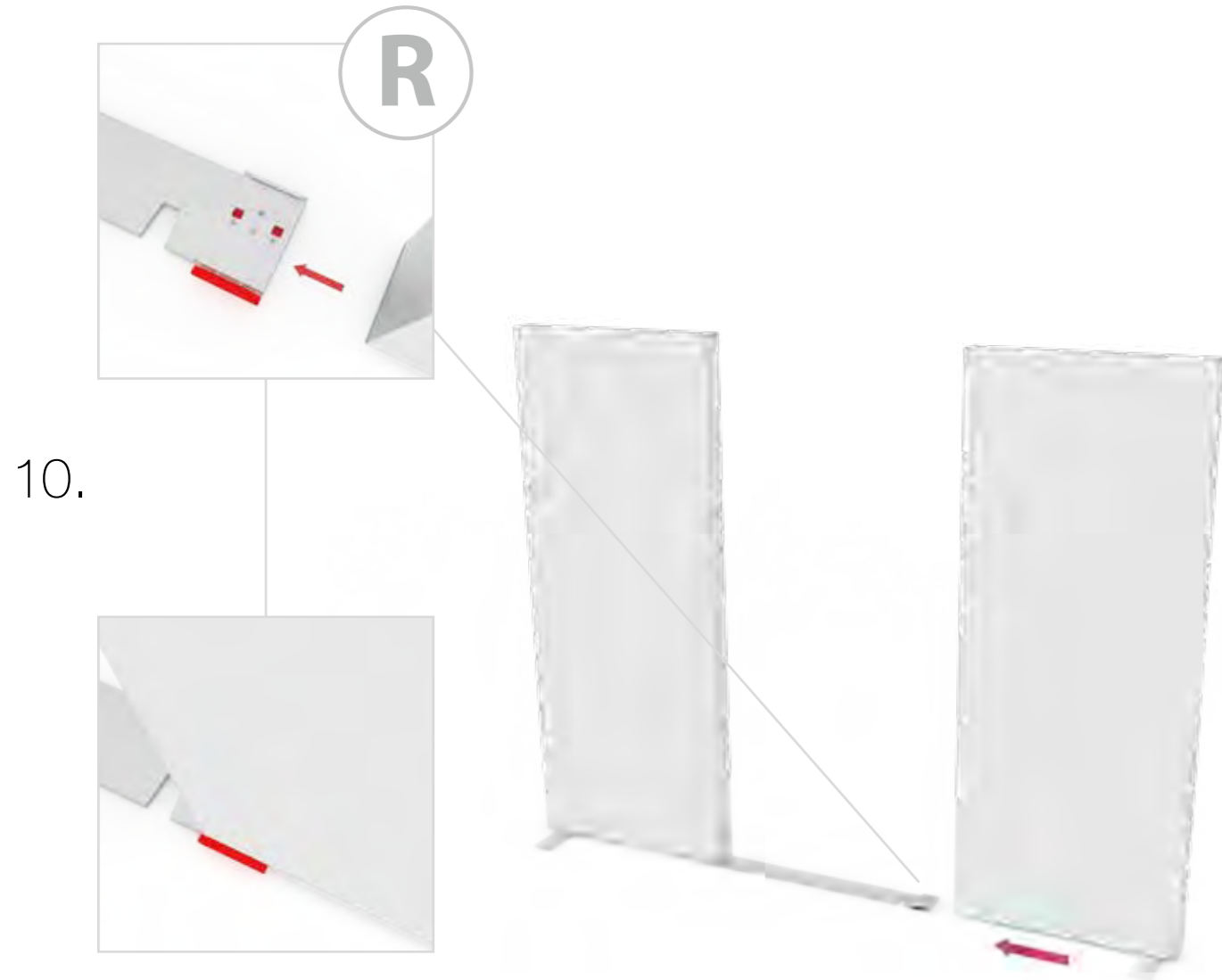
8.



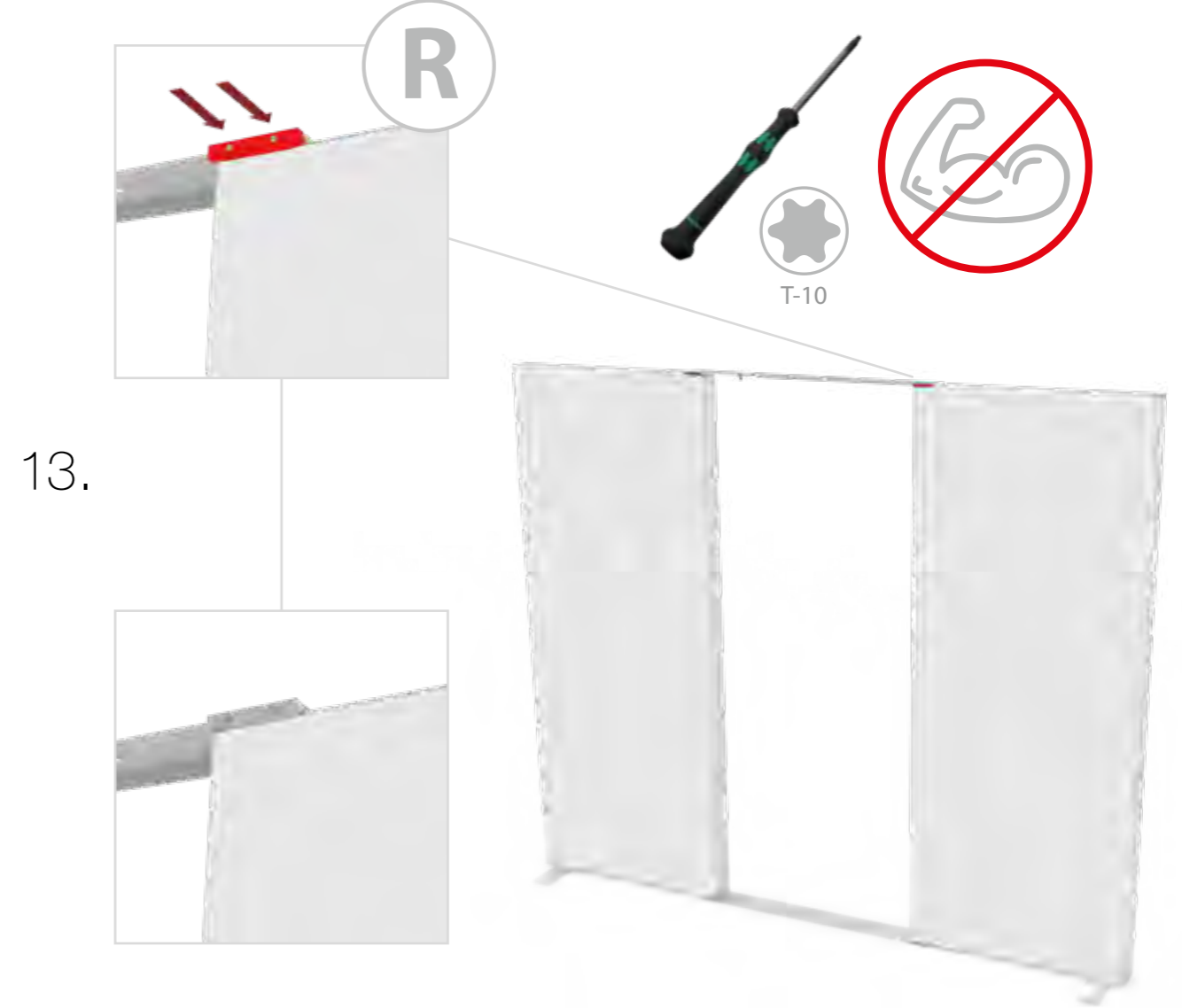
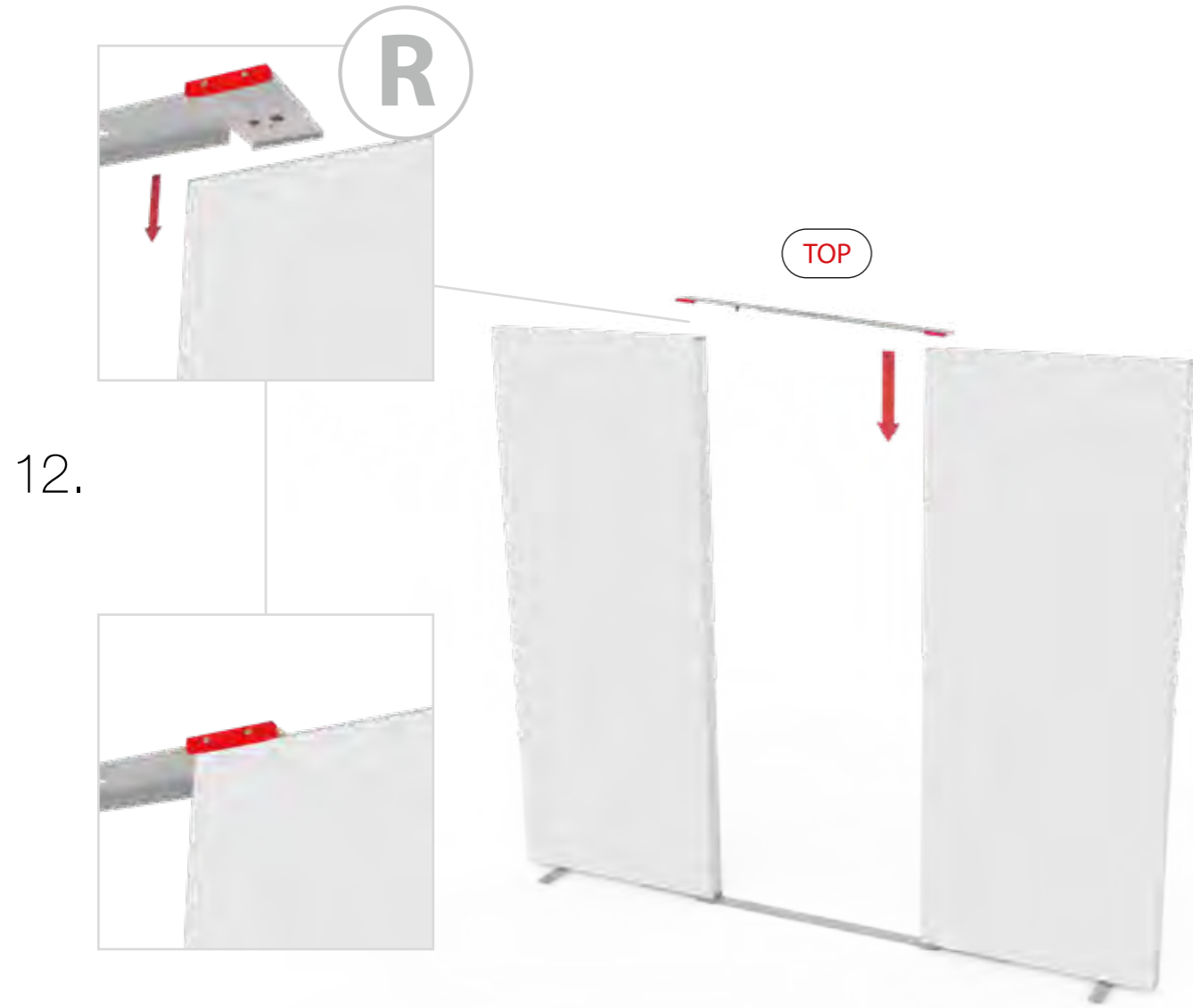
9.



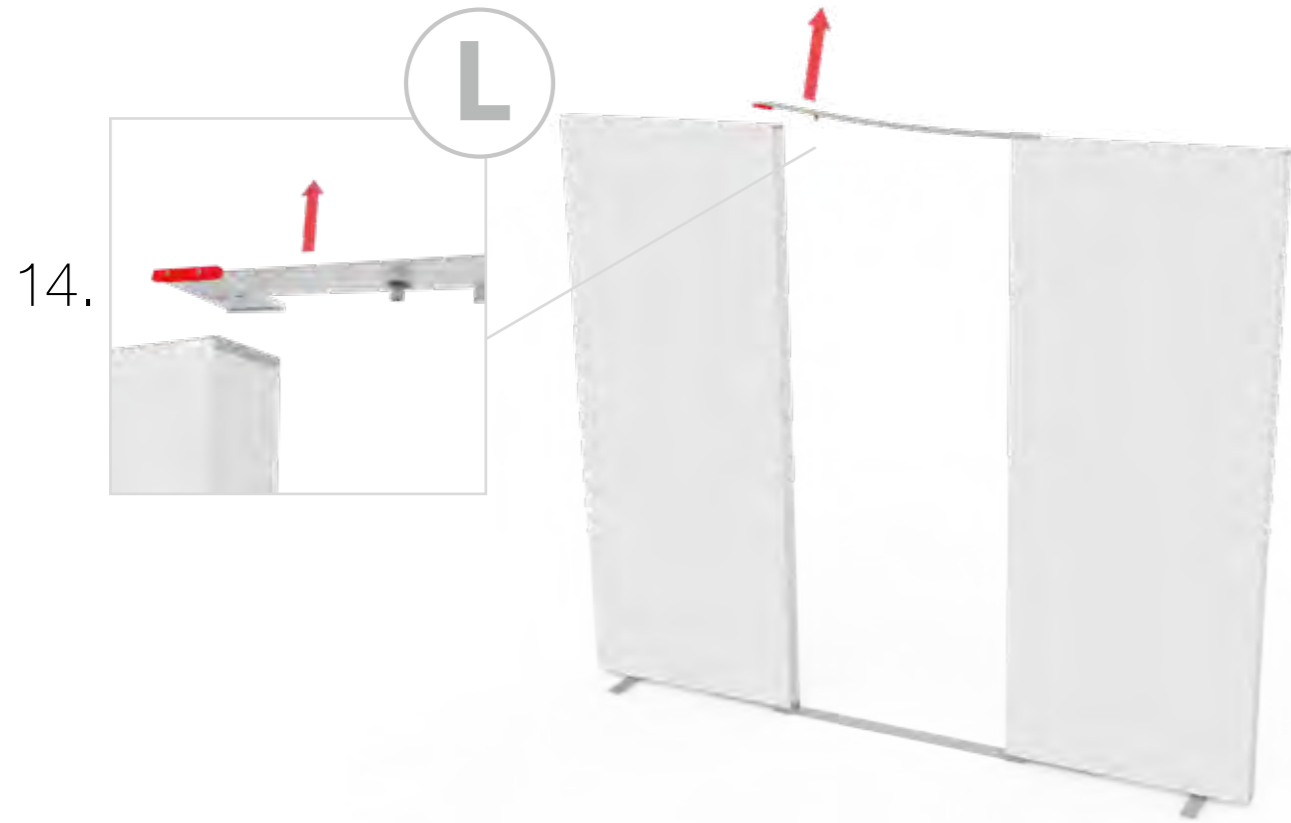
GERADE VERSION/STRAIGHT VERSION



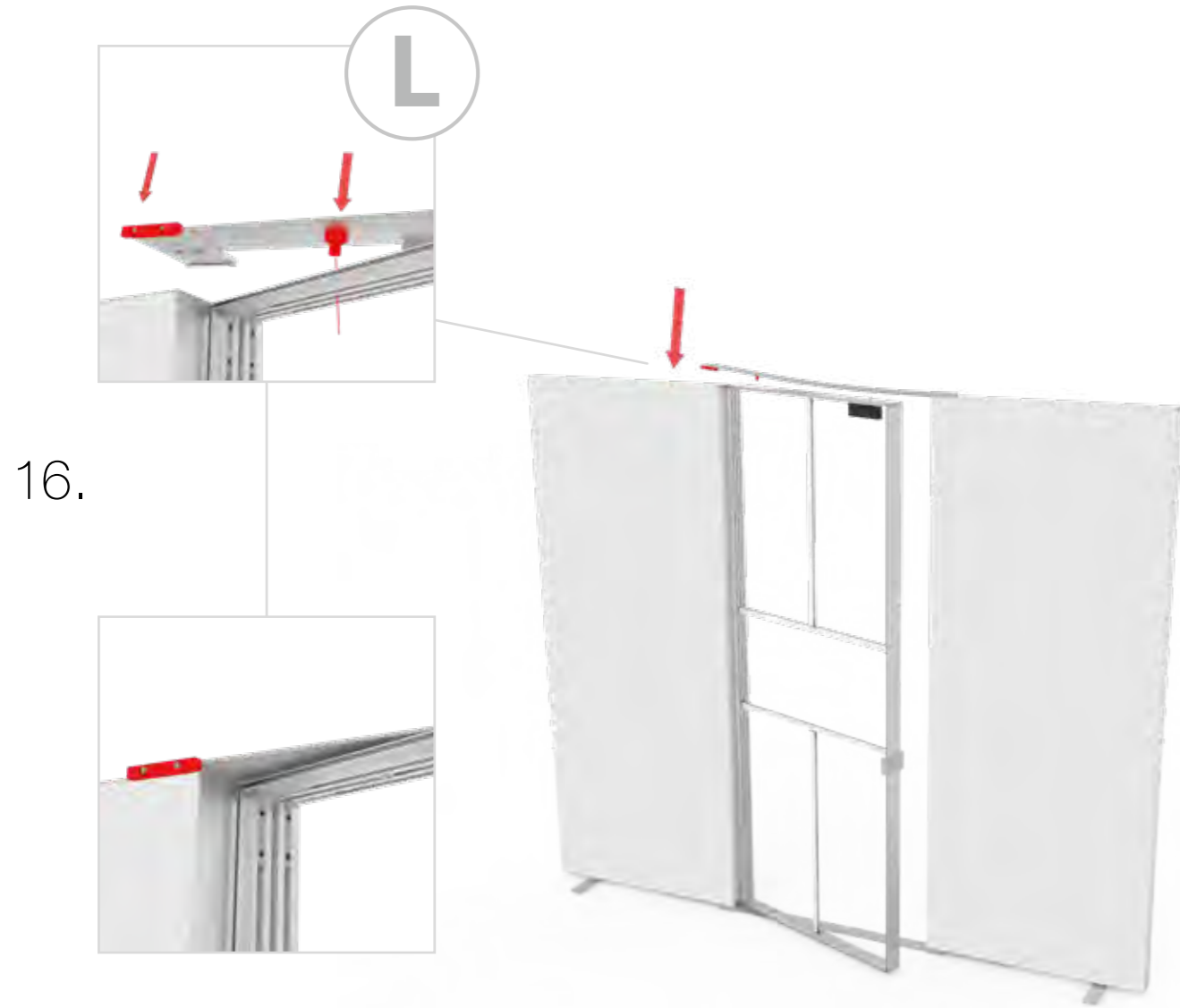
GERADE VERSION/STRAIGHT VERSION



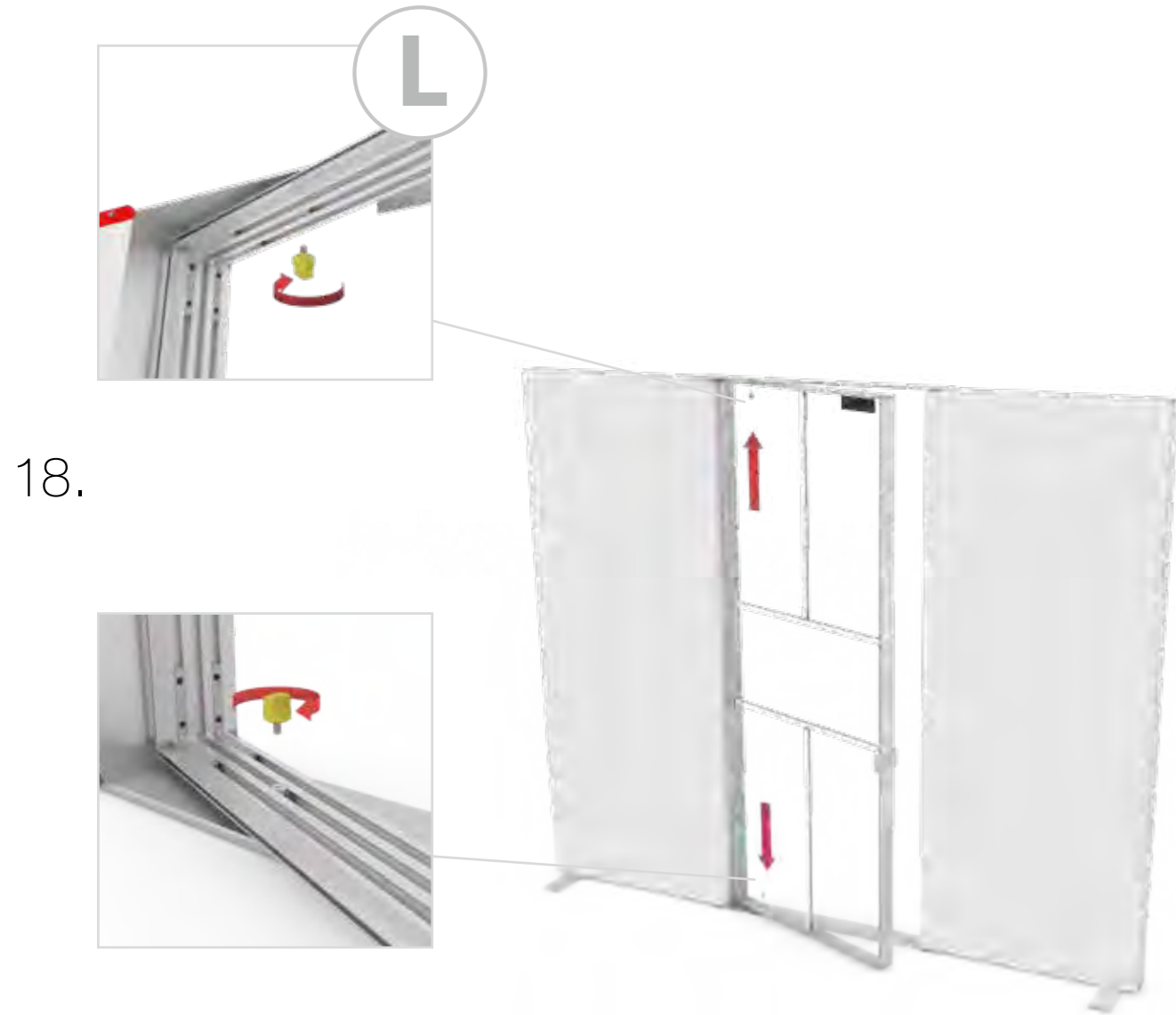
GERADE VERSION/STRAIGHT VERSION



GERADE VERSION/STRAIGHT VERSION



GERADE VERSION/STRAIGHT VERSION



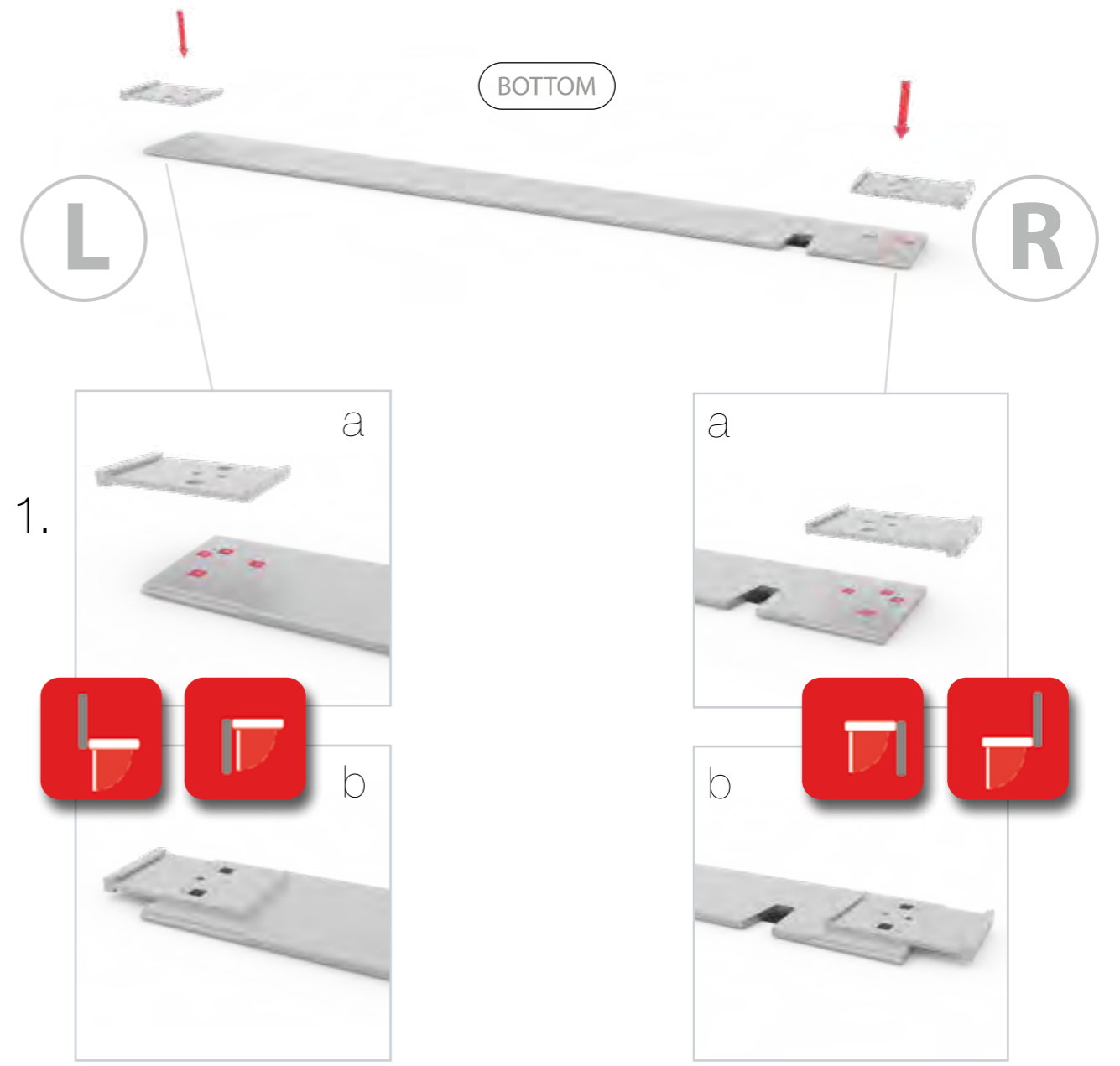
GERADE VERSION/STRAIGHT VERSION



2 SEK. DRÜCKEN
PRESS FOR 2 SEC.



ECK- & KOJENVERSION/CORNER & STORAGE VERSION



ECK- & KOJENVERSION/CORNER & STORAGE VERSION

